

# PIX-E5

Recording Field Monitor for Professionals

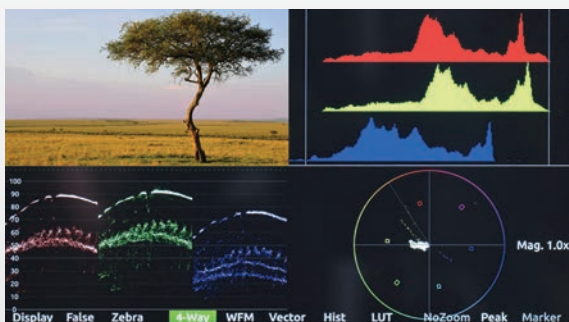
VIDEO DEVICES PIX-E5



Compact 4K recording monitor.

**Advanced Monitoring.** The PIX-E5 excels in providing what discerning cinematographers and videographers need most: high-resolution, color-accurate, sunlight-viewable monitoring, with a wide 179° angle of view.

With the press of a button or a tap on the touchscreen, the PIX-E5's impressive suite of monitoring features provide all of the tools necessary for unrivaled focusing speed, exposure assistance and framing.



**Four-Way Monitoring** (Clockwise: Video Feed, Histogram, Vector Scope, Waveform)

**Unsurpassed Recording.** The 4K-compatible PIX-E5 is the first on-camera monitor to offer the full range of Apple ProRes codecs, including the highest quality Apple ProRes 4444 XQ, a 12-bit codec designed to preserve the detail in wide dynamic range imagery captured by today's high performance digital image sensors. Files are directly recorded to removable mSATA drive.

**Rugged Durability.** The camera-mount PIX-E5, with its compact, die-cast metal chassis and LCD protected by Gorilla Glass 2, is designed to withstand the most extreme and demanding production environments.

## KEY FEATURES

### PIX-Assist™ Monitoring Tools

- TapZoom™ for Rapid Focus
- LUTs
- Scopes including: Waveform, Histogram, and Vector Scope
- False Colors and Zebras for Setting Exposure
- Guide Markers for Framing
- Peaking
- Anamorphic Desqueeze (4:3)
- Full HD, Ultra-Bright IPS Touchscreen
- Real Buttons for Fast Tactile Control

### Recording Capabilities

- 4K Recording
- Apple® ProRes 4444 XQ, 12-Bit

### Solid Construction

- Robust Die-Cast Metal Chassis
- Virtually Indestructible Gorilla® Glass 2



PIX-E5 Left Panel

PIX-E5 Right Panel

# PIX-E5

Recording Field Monitor for Professionals

## SPECIFICATIONS

### Display

LCD Size	5-inch
Resolution & ppi	1920 x 1080, 441 ppi
Luminance (Brightness)	500 nit
IPS with Gorilla® Glass 2	✓

### PIX-Assist Monitoring Tools

TapZoom	2x, 4x
LUTs	S-Log 2 & 3, Canon Log, V-Log, plus custom LUTs (.cube)
Peaking Filter	✓
Guide Markers	✓
False Colors	4-step, 12-step
Zebras	Zebras 1, Zebras 2

### Scopes

Waveform Monitor	Luma (White, Green) RGB (Overlay, Parade)
Vector Scope	✓
Histogram	Luma (White, Green) RGB (Overlay, Parade)
Four-Way Monitoring (Video Feed, Histogram, Vector Scope, WFM)	✓

### Recorder

Max Resolution/Frame Rate	120 fps (HD); 30 fps (4K UHD, 4K DCI)
Codec	Apple ProRes Proxy to Apple ProRes 4444 XQ
File Transfer to Computer	via SpeedDrive USB 3.0 interface

### Media

SpeedDrive – Enclosure plus approved 240 GB mSATA Solid State Drive  
SpeedDrive – Enclosure only (compatible with third-party 128 GB to 1 T mSATA SSDs)

### Video

Inputs	6G-SDI, 3G-SDI (Level A & B), HDMI
Outputs	HD-SDI, HDMI

### Audio

Max No. Tracks	8
Analog Inputs	Two unbalanced line, 3.5mm Two balanced mic/line, XLR (via optional PIX-LR)
Embedded Audio Inputs	8 SDI and Two HDMI
Headphone Output	✓

### Remote Control & Timecode

Record Start/Stop Flags	SDI, HDMI
Embedded Timecode	SDI, HDMI, 3.5 mm Line In

### Powering, Weight, & Dimension

Power Source	EXT DC (10-34V), (optional) Two Sony L-mount batteries
Weight	1 lb (16oz)
Dimensions	5.4 in x 3.4 in x 1.6 in (WxHxD) 137.1 mm x 86.3 mm x 40.6 mm (WxHxD)

## ACCESSORIES

(PIX-E5 package includes monitor and power supply only. Accessories sold separately.)



**SpeedDrive™\*** is an industry standard mSATA drive contained within a custom-designed enclosure. The SpeedDrive, which plugs directly into the PIX-E, doubles as a USB 3.0 thumb drive for very high speed offload to any computer without the need for a special cable or drive docking station.

Two SpeedDrive options are available: a 240 GB SpeedDrive and an Enclosure-Only version that allows the user to choose and easily fit any size of mSATA drive. mSATA drives are available in sizes ranging from 128 GB to 1 TB.

\*SpeedDrive options are purchased separately



**PIX-LR** audio interface is a screw-on accessory that provides PIX-E monitors with two XLR inputs and outputs, featuring Sound Devices-caliber mic preamps, hyper-accurate LED metering, and dedicated transport and gain controls.



**PIX-E5/E5H KIT** includes a hard case, sun hood, articulating arm, two 240 GB SpeedDrives, two Sony-compatible L-mount batteries, the PIX-USB3 Y-cable, and video I/O cables, two right-angle HDMI adapters, two right-angle BNC adapters PIX-E CASE, alone, available as well.

**SOUND  DEVICES**

Post Office Box 576  
E7556 State Rd. 23 and 33  
Reedsburg, Wisconsin 53959 USA  
**+1 608.524.0625 main**

Features, nomenclature, and specifications subject to change.

© 2015, Sound Devices, LLC

Rev. 5 (09/15)